



# RENEW & REACH

We are renewing our building  
so we can reach more people  
for generations to come



'...we will tell the next generation the praiseworthy deeds of the LORD, his power, and the wonders he has done.'

Psalm 78:4

# Contents

## THE VISION

Letter from the Lead Pastor.....	01
Our story so far.....	03
Why do buildings matter?.....	07
Why are we building?.....	09
What do we hope to achieve?.....	13

## THE PLAN

What do we hope to build?.....	19
Stage One.....	21
Stage Two.....	23
Stage Three.....	25

## THE NEED

How do we intend to finance this project?.....	31
How much do we need?.....	33
How can you give?.....	35
Why should you give?.....	37
How much should you give?.....	39

## NEXT STEPS

10 ways to pray for our church.....	45
What if we do nothing?.....	47
Estimated timeline.....	48
Frequently asked questions.....	49
Who has been involved in this project?.....	55

# THE VISION

# Letter from the Lead Pastor

Dear Church,

I'm excited to share this booklet with you, which outlines the details of our building project, 'Renew & Reach'. This title summarises what we are hoping to achieve: we want to renew our building so we can reach more people for generations to come.

Our church has a long and fascinating history, stretching back to 1951 (see page 3-4 for the amazing story). We've called home to many different suburbs, met in many different buildings, and gone by a number of different names, but the mission has always been the same: to reach more people with the good news of Jesus.

By God's grace, over the years, we've seen that happen. We've seen God bring more people into his family. Today, over 800 people (kids included) call Oasis Church home.

But there are still hundreds of thousands of people in the Moreton Bay region who are lost and without hope because they are without Christ.

There is more for us to do.

As part of our ongoing mission, we have been considering our facilities. Our current campus has some limitations, which will restrict our ability to grow and to reach more people into the future. The vibrant life and activity of our church is currently hidden from view of the main road and the spaces of our building are dated and becoming too small for our growing church family. It might seem simpler and cheaper to do nothing, or to make only small, superficial updates to our facilities. But to do so will have significant and ongoing consequences, for us and for future generations.

We believe this building renewal project will establish our long-term home and secure our ongoing witness for many years to come in our strategic location, right alongside Genesis Christian College and right on a busy main road. We believe it is worth investing in our facilities to ensure we have a home for the gospel, a home for the lost and a home for our church family for generations to come.

When Church Council initially began to consider the future plans for our property, this was the goal. We wanted facilities that would not only serve the current needs of our growing church family, but we also wanted to consider how we could effectively engage with our local community and build a firm foundation for the proclamation of the gospel into the future.

With this in mind, we engaged Casey and Rebekah Vallance from Cultivar Architecture to work with church leaders on a master plan that integrates the entire property and plans ahead for the next 30 years and more.

This is the plan we are putting before you. This plan is not a quick fix. Nor will it happen quickly. It is holistic and long-term. But if we approach it together, under God, it is within our reach.

Jesus hasn't stopped building his church, so let's join him in his mission. Let's invest the time and money and gifts that God has given us into his kingdom. Let's be willing to take big steps, bold risks, and brave sacrifices. Let's renew and reach together, for the good of others and for the glory of God.

With you on the journey,

*Adam Schoenmaker*

**Adam Schoenmaker,  
Lead Pastor**

**'...I will build my church,  
and the gates of Hades  
will not overcome it.'**

**Matthew 16:18**



# Our story so far

The 'First Reformed Church of Brisbane' was instituted and began meeting in the YMCA Building in the Brisbane CBD.

1961

1951

A run down and dilapidated church building was purchased on Sherwood Road in Toowong.

After much hard work and extensive renovations, the church building in Toowong was officially opened and services began at the newly christened 'Reformed Church of Brisbane.'

1962

1965

Church leaders began to explore the possibility of starting a church on the northside of Brisbane.

Finally, after some unfortunate setbacks, a partly finished church building was purchased on the corner of Trouts Road and Bourke Street in Everton Park, which would become the home of 'Everton Park Reformed Church'. The auditorium had space for 80 people, a downstairs kitchen, a store room, and a separate toilet block.

1973



Volunteers were abundant for every week and for every task that was needed. We truly experienced the provision of God through the hearts and hands of his people.

Jack van Strien,  
Founding member of our church

1980

After years of slow and steady growth at Everton Park, the church needed to find a building with greater seating capacity and more suitable facilities. A building was found and purchased on Collier Street in Stafford, which became the home of 'Stafford Reformed Church' and later, following another name change, 'North Brisbane Reformed Church'.

An agreement was struck between the North Brisbane Reformed Church and the 'North Brisbane Christian Schools Association' (NBCSA) to develop a 12-acre property at Youngs Crossing Road, Bray Park, with the intention to build a multi-purpose facility that would be used by both the church and a new Christian school that was to be started. By the end of 1990, construction on the new church building had begun with many church members involved in the fundraising and construction process.

1990

1991

Finally, after much prayer and hard work, Genesis Christian College commenced at the beginning of 1991 with 32 children from Grades 1-7, while the first service of 'Bray Park Reformed Church' was held in the newly constructed church building on Sunday 16<sup>th</sup> of July, 1991.

In the years since moving into the church building at Bray Park, there have been many changes and additions to our facilities, including the removal of interior walls to make more space, an extension to the church hall, the conversion of the former house into the church office, a new commercial kitchen, the construction of The Shed and undercover areas, and the addition of The Park, our on-site café. We also changed our name to 'Bray Park Community Church' in the early 2000s.

2000

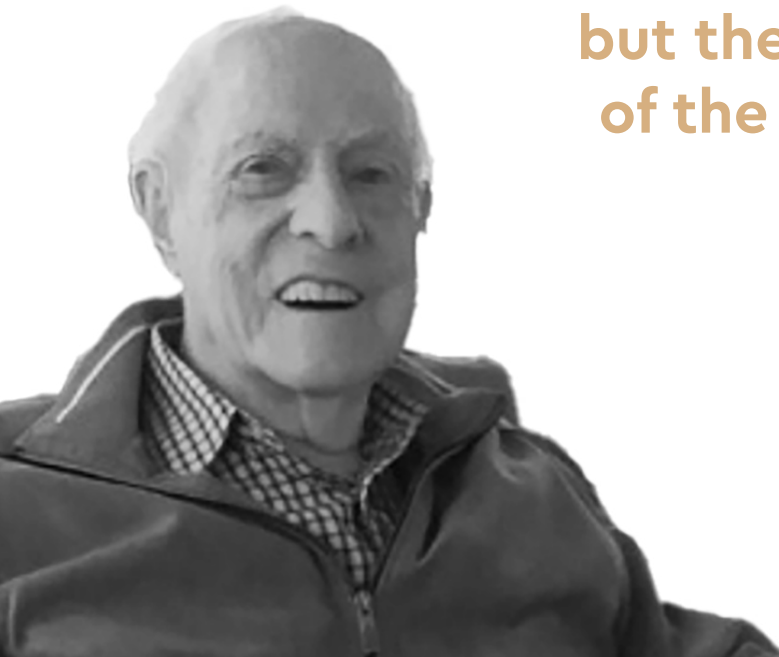
Due to growth in our church family, we started a third service (a second morning service) and changed our name to 'Oasis Church.'

2022

After the passing of Jack van Strien in early 2021, the following quote was found on the back of his notes that formed the basis for this account, which perfectly summarise where we've been and where we are going.



**"God has used us,  
a pilgrim people,  
to establish churches,  
enroute to evangelism  
and discipleship.  
We are not just a  
church with a future,  
but the church  
of the future."**



# Why do buildings matter?

## 01 Church buildings support the mission

Church buildings don't connect anyone to Jesus. However, they do provide a place where people can hear the gospel and find life in Jesus. That's why buildings matter.

## 02 Church buildings are a place to gather

God wants his church to gather. In fact, the word church means 'gathering' or 'assembly'. This is what we do every Sunday in our building. Of course, our building is not the most important part of our church community, but it is not unimportant either. Our building plays an important role in our worship of God. It is our gathering place and where we can engage in fellowship and family life.

## 03 Church buildings create space for ministry

Our building is used for many different ministries throughout the week, not only on Sundays. This includes The Park, PlayGroup, Alpha courses, various Bible studies, Men's and Women's events, Youth, Young Adults, the Community Cupboard, conferences, training events, community outreach events and much more. Our facilities are used every day by various ministries and programs.

## 04 Church buildings are a form of good stewardship

This project gives us an opportunity to enhance the property God has entrusted to us. Former generations gave generously and served sacrificially to build our facilities. We stand on their shoulders. It is now our time to joyfully partner in the privilege of investing into our facilities for the good of those who will come after us.

## 05 Church buildings can serve the local community

To make our building available to our neighbours is a way to love them and participate in the life of our local community. Each week we open our doors to the Genesis Christian College community, we host weekly Alcoholics Anonymous meetings, craft groups, business groups, engagement parties, and other community gatherings. Our facilities are used every day of the week by multiple groups. This project will enable us to continue to love our neighbours with facilities that better serve their needs.



**We've had our building since 2010 and I can't commend enough the value of investing in a building. The return has been manifold. In pretty much every room (including the kitchen) people have given their lives to Christ. Because buildings are for people, and people matter to God.**

Ray Galea, Founding Pastor at MBM Church,  
Rooty Hill, NSW.

# Why are we building?

## Because God has been building our church

Over 30 years ago, our forebears generously and sacrificially purchased this land, built our current church building, and established Genesis Christian College. It was a big step fuelled by bold faith in our big God. We are here today because of their courage and God's faithfulness.

By God's grace, over the past three decades, as the gospel has been proclaimed, we have witnessed people receive forgiveness, hope, and life in Jesus. We've celebrated friendships, weddings, babies, families, and funerals. Countless lives have been impacted because of the faithfulness of the previous generation.

We want to partner with what God is doing now. We have grown significantly as a church in the last few years. We now want to position ourselves for the next 30 years of growth. We want to see the gospel taken forward by the next generation. We believe that investing in our church campus will help to achieve these aims.

## Because our current building has limitations

Our current church facilities have served us well for many years, but there are several factors that now limit our ability to grow and to run our ministries effectively. These include:

- We are beginning to outgrow our seating capacity in the auditorium on Sunday mornings. This (wonderful) issue can't be solved by simply adding more services.
- Community time after Sunday services is hampered by the current layout with people spread across various areas of our campus (e.g., The Shed, the undercover area, the playground, the church hall, The Park).

- The former house serving as our church office is ageing and not fit-for-purpose.
- Certain aspects of the church premises, like the toilets, foyer and parent's room, need updating to ensure members and guests feel comfortable and welcome. This has been a consistent point of feedback in our annual church survey in recent years.
- The facilities for our care ministries, like the Community Cupboard, are inadequate and not fit-for-purpose.
- Finally, we aren't fully utilising one of our greatest assets – our prime location. We are situated next door to a large school, on a main road, within walking distance of a large shopping complex (with another to come soon). Yet from the road, our current campus configuration doesn't show the vibrant activity that takes place on Sundays and through the week. We want to show our local community that our church is alive and thriving. We want to communicate that we are open, friendly, and welcoming. We want The Park to be a more visible front door for the community to visit us.

**Buildings are for  
people, and people  
matter to God.**





**We need to develop our church building so that we can continue to help more people find life in Jesus for generations to come. We need your support to make it happen.**

# What do we hope to achieve?



## To help more people find life in Jesus

Our church needs to be a place for reaching out to those in the Moreton Bay region and connecting them to Jesus. We need a church where people can hear the gospel clearly without distraction. We need welcoming spaces for Sunday services, Alpha courses, Oasis Kids, Oasis Youth, the Community Cupboard and other outreach ministries.



## To enhance our life together

Our aim is to create a central, all-weather space for people to meet and build relationships before and after services. This would include access to coffee and comfortable places to sit so that important conversations can be had. We are doing this so that we can connect people to each other and enhance our life together.



## To connect with our local community

We love welcoming guests to church. But we realise that church can be a daunting place to visit and it's important to remove barriers wherever we can. We are seeking to create a new entrance that will be more transparent and inviting, as well as safer (given the current entrance to the foyer and The Park opens directly onto the road). The new layout will communicate to our local community that we are open, friendly and have nothing to hide. The community will be able to see the coffee, the food and the people – that church is alive!



## To invest in future generations

Christians never think only of our own generation. We want to see the gospel preached to our children and grandchildren and great-grandchildren. We want to provide a home that God might use to proclaim the gospel in Moreton Bay for many years to come. At the moment, many of the rooms and spaces for our ministries, particularly to young people, are ageing and too small. Our Creche room, Jnr. Kidz room, and Parents Room are not adequate for the needs of our growing church family. The building renewal will provide updated and additional spaces for our ministries to be expanded and our mission to continue for generations to come.



## To grow in servant-heartedness and generosity

The benefits of this building renewal will not simply be physical. We will reap a spiritual harvest as we sacrificially and generously give towards the mission of God through our church. For most of us, this will be a 'once in a lifetime' opportunity. Grab this opportunity to be part of God's work in our day for his glory.





**We want to see the gospel  
preached to our children  
and grandchildren and  
great-grandchildren.**

# THE PLAN

# What do we hope to build?

An integrated and visible church campus

We are constructing a large, indoor foyer that will flow into the church auditorium and outside to an undercover plaza area that will provide a central meeting place for our church community. This foyer area will include a new and expanded space for The Park with ample seating and a play area for children, with access to a new amenities block and commercial kitchen. These facilities will face Youngs Crossing Road, which will connect the thriving activity of our church more visibly to our local community.

We will also reconfigure the auditorium to provide more seating and construct a new multi-purpose facility with a hall, ministry spaces for kids and youth, a new reception area with offices for staff, along with plenty of additional rooms and breakout areas.



# Stage One

## Foyer

The current foyer, which is the main entrance to the church auditorium, is very small and leads directly onto the main driveway. We want to create a large foyer which is away from the movement of cars on the driveway and provides ample and comfortable space for people to connect before and after services. This will also include the installation of new entry doors from the foyer into the existing auditorium.

## The Park

The Park will be relocated so that it serves the new foyer area and is connected to the outdoor plaza area with a playground for children. This will provide a space that can be used in all weather conditions and will create a vibrant hub of activity. The plaza will be visible from the main road and the school arrival area.

## Outdoor Plaza

Our main spaces for communal gatherings are currently spread across three different areas on our campus. The outdoor plaza area will create a large, central area that is connected to the foyer and to The Park with plenty of seating and a playground for children. This plaza area will be visible to our local community and put on display the vibrant activity of our church community. This plaza area will include a roof and be fenced off for the safety of our children.

## Amenities

The current toilet facilities are dated and inadequate. We want to create a new central male and female amenities block which is large enough to cater to the needs of our growing church family.

## Parents Room

After the new foyer area and amenities have been constructed, the current foyer area, including the meeting room and male amenities will be demolished and remodelled to allow for a larger Parents Room and a more expansive and safer concrete paved area adjacent the road which leads to the new foyer.



*Artist impression – indicative only*

# Stage Two

## Next Gen & Administration Centre

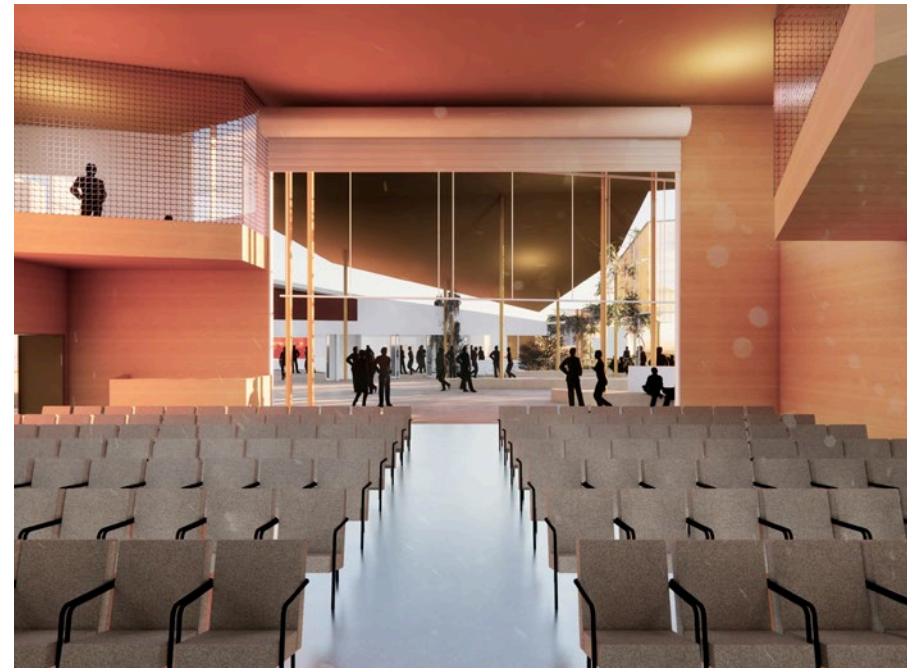
We want to replace the current office, which is dated and unsuitable for a growing staff team, and The Shed with a new two-storey Next Gen (Kids and Youth) and Administration Centre with a visible entrance foyer and reception. This multi-purpose facility will serve Oasis Kids, Oasis Youth and our church community, as well as GCC and our broader community.

The Next Gen facility will include the following:

- Creche room and Jnr. Kids room which has access to a covered and secure outdoor play area and access to sink and toilet.
- Kids Church lounge area with two breakout rooms.
- Oasis Youth lounge area with two breakout rooms and flexible use of outdoor area and foyer area.
- A large meeting hall with stage and AV.
- Oasis Church Administration to include reception with space for 4 staff, 3x offices, 4-6 open plan flexible workstations, meeting room, copy room, storage rooms.

## Office Carpark

The current office carpark will be relocated to the rear of the Next Gen building and a new carpark with loading access will be constructed. The goal is to replace the current carpark with vibrant activity on the road frontage. The carpark surface is to be treated to create a breakout area for youth activities when the carpark is closed off for events/evenings.



*Artist impression – indicative only*

# Stage Three

## Auditorium

Space in the current auditorium is becoming limited on Sunday mornings, especially during peak seasons. There are also some challenges in the size and placement of the Parents Room and the entrance to the Hall. We want to reconfigure the auditorium and the stage location to increase capacity and best serve future growth. Currently, our maximum auditorium capacity is around 400. We estimate this could be increased to around 550–600.

## Kitchen

A large kitchen and servery area for church events and the Community Cupboard will be allowed for in Stage One (within the same building as the Amenities) but actually constructed at this later stage. The kitchen will be in a central location in the plaza area to serve the needs of our church family.



Artist impression – indicative only



Artist impression – indicative only



young's crossing road



GENESIS  
CHRISTIAN  
COLLEGE

OASIS CHURCH

existing carpark

**THE  
NEED**

# How do we intend to finance this project?

We want to be good stewards of the land and existing buildings that have been entrusted to us by God and by previous generations. While these plans are extensive and will have to be implemented over several stages, we believe that they are the optimal way to maximise our ministry impact over the next 30 years.

## How could we pay for the building project?

There are three key potential sources of funding available to us to move forward with this vision: our existing operational budget and savings, a new bank loan, and new special giving by our church family.

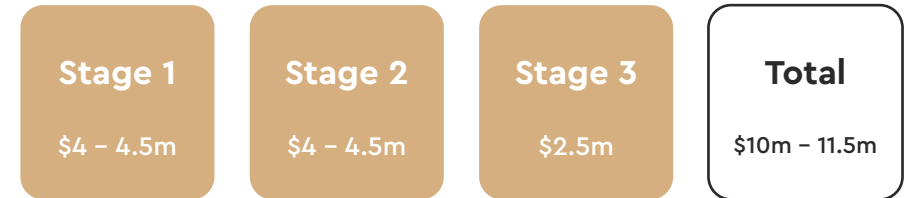
We currently prudently manage our operational budget (\$1.1m in 2024) so that each year our total expenses match or are slightly lower than our total income (primarily tithes & offerings). Sometimes we end the year with a small surplus. However, we do not have sufficient margin in our existing operational budget or sufficient savings in the bank to achieve a building project of this scale.

When borrowing from the bank, we believe that we should not borrow an amount that excessively burdens the future generation or prevents us pursuing other ministry aspirations that we believe God has in store for us in the coming years, such as planting a second campus in another location. We consider that it would be prudent for us to borrow up to **\$1 – 1.5m with a 15 year term**. At a 7% interest rate, this would require repayments of **\$162,000 per year, or roughly \$550 per household per year** above existing giving. We believe this is attainable and would not jeopardise the church's continued financial resilience.

This means that any significant building project will primarily need to be paid for through special giving by our church family, supplemented by a prudent bank loan.

## How much will it cost?

We will not know exactly how much the project will cost until we go to tender and test the market for each stage. However, an indicative high level cost estimate is:



These numbers might seem high, particularly for those of us who have not had experience building in recent years with the price inflation. But even if something is expensive, it can still be good value.

## How long will this take?

We expect that this project will need to be completed in stages over several years. We cannot provide a definitive timeframe as the amount of support we collectively provide will determine whether plans need to be modified or delayed. We will only proceed with plans that are adopted and supported by our church family, including financially.

We could have set before you a small vision that is more within our control to achieve. But we want to make room for faith, for God to work in a mighty way. We believe that the biggest risk for our church is doing nothing or having a small vision of the impact that we can make for the kingdom (e.g., Matthew 25:14–30).

With faith in God's provision, we have prepared what we believe is a big, bold and compelling vision to maximise our ministry impact for God's glory and the good of our neighbours over the next 30 years. It is up to us, as the church family, to choose to take hold of the vision.

# How much do we need?

It would be wonderful if we could complete the project all in one go. Realistically, the cost and scope of the work means that we will have to complete it in various stages over the course of a number of years.

Our initial goal is to complete Stage One, which will serve as a visible front door for our church and a comfortable gathering place for our church family.

To complete Stage One, our target is to raise **\$3 million dollars**.

While this target sounds daunting, we believe if we all play our part it is within our reach. After all, we belong to a God who is able to do immeasurably more than we ask or imagine (Eph. 3:20) and who calls us to be generous with the money he has entrusted to us (2 Cor. 8:7-9).

Through the 'Renew & Reach' campaign you will have the opportunity to give a **One-Off Gift**, which will go towards the upfront cost of the project. There will also be an opportunity to give an **Ongoing Gift** to service the ongoing loan costs.

These gifts would be over and above your normal giving towards the ongoing work of Oasis Church.

We hope to be able to implement the entirety of the plan in due course, but we also acknowledge, given its scope, it will take a number of years and ongoing fundraising efforts. Our collective response to the giving campaign will determine the scope and speed of the work that is undertaken. We hope to complete all of Stage One initially, but if necessary, we will modify the plans depending upon the amount we are able to raise. We would ask and encourage you to give as much as you are able.

Here is an idea of how we will be able to do this together.

We have around **560 adult members and regular attenders** in our church family. If each adult gave **\$5,400**, we would reach our target. This is around \$450 per month or \$105 per week over the course of a year.

To think about it another way, we have about **300 households** which make up our church family (members and regular attenders). If each household in our church gave around **\$10,000** we would reach our target. This is approximately \$830 per month or \$190 per week per household over the course of a year.

Of course, some of us can give much more than this; others less.

Stewardship calls for equal sacrifice, not equal amounts.

## What will you contribute?

The cost of this project is not part of our normal budget. It will need to be paid for by everyday members of Oasis Church over and above normal tithing.

**"Everything comes from you,  
and we have given you only  
what comes from your hand."**

1 Chronicles 29:14

# How can you give?

To raise the money required, we are asking people to submit a **Pledge Card** on **Pledge Sunday** on **Sunday 18<sup>th</sup> of May, 2025**, which will outline your gift to this initial stage of the 'Reach & Renew' campaign. We hope that as you prayerfully read through this booklet and engage in the campaign in coming months, you will come ready, willing and able to give on Sunday 18<sup>th</sup> of May.

The Pledge Card will give you a few different options to give:

## One-Off Gift

This is a gift towards the initial down payment of the building project. Our goal is to have as large a deposit as possible to minimise the amount we need to borrow from the bank so we can minimise the interest we need to pay.

## Ongoing Gift

An ongoing gift supports our ongoing loan commitments. This commitment is vital to see the vision for Stage One realised.

Please bear in mind that the day-to-day running of Oasis Church depends on your regular giving. If you choose to give to the building project it should be in addition to your normal church giving.

If Oasis Church is your church and you haven't started giving regularly yet, we would encourage you to set that up first as God would have you do, and then give to the building fund. You can find details at [oasischurch.com.au/give](http://oasischurch.com.au/give).

**1 gift** of \$100,000

**6 gifts** of \$50,000

**12 gifts** of \$30,000

**15 gifts** of \$25,000

**20 gifts** of \$20,000

**32 gifts** of \$15,000

**50 gifts** of \$10,000

**55 gifts** of \$5,000

**50 gifts** of \$3,000

**60 gifts** of \$1,000

**300 gifts = \$3 million**

# Why should you give?

## **Because God has given everything to us** (Matthew 25:14–30)

We believe that our church building isn't just a room that we meet in – it is a gift that God has given us to be used for his purposes. As with all gifts from God, we will be held accountable for how we use it (Matthew 25). As God continues to give us growth, we want to be good stewards of our facilities, maximising the potential for gospel ministry in this building far into the future.

## **Because it is an investment in eternity** (Matthew 6:19–21)

We spend our money in many ways – bills, clothes, food, shelter, coffee, holidays. This project is an opportunity to spend our money on a cause that will reap eternal benefits. Rather than an expense, consider this project an investment – one that will have an impact well beyond your time at Oasis Church. It is an opportunity to invest in a home for the gospel to be proclaimed for generations to come where we hope and pray that thousands more will come to know Jesus.

## **Because it is an opportunity to serve others** (Philippians 2:3–4)

The gospel shifts our focus from ourselves and our needs and onto God and his purposes for his world. As Christians, we strive to imitate the selfless humility of Jesus, who put the needs of others above his own. This building project requires us to look outside our own interests and preferences (see Philippians 2:3–4), and to consider others. To consider the people and ministries with varied needs who will use this building for God's purposes not just today, but for many years to come.

## **Because sacrifice is the way of Jesus** (2 Corinthians 8:9)

Property costs money. Most of the cost of the building renewal will only be met by the generous and sacrificial gifts of people who call Oasis Church home. The cost of this building won't be met with our spare change – it will require sacrifice, digging deep and going without – for a purpose and a kingdom bigger than our own. But of course, we can do this joyfully because we belong to Jesus who sacrificed himself for us joyfully on the cross; he held nothing back from us (Hebrews 12:2). This is what motivated previous generations who built our current building, which has served us so well for so many years. Our sacrifice in 2025 and beyond will ensure this building continues to exist and thrive as a centre for gospel proclamation into the future.

## **Because we want more people to find life in Jesus** (1 John 5:11–12)

We are embarking on this project not because we love buildings, but because we love Jesus, and we want more people to find life in him. This project is about Jesus – ensuring that we can continue to proclaim the good news about Jesus to as many people as possible for as many years as possible.

**“And this is the testimony: God has given us eternal life, and this life is in his Son. Whoever has the Son has life; whoever does not have the Son of God does not have life..”**

1 John 5:11–12

# How much should you give?

Here are some suggestions to help you consider how to give generously:

## Ask God to help you be generous

This might seem simple, but many find it a hard thing to pray. But don't fear, God may answer in multiple ways. He might reduce your expenses. He might increase your income. He might show you a way to use the equity in your home. You might be able to sell something valuable. Perhaps you have been blessed this year with an inheritance or you are sitting on some money you want to use to express your thanks to God. Pray and be creatively generous!

## Involve your kids

If you have children, talk and pray with them about this project. Talk about why it matters. Talk about what you could sacrifice as a family: A holiday? A renovation? Could you do a garage sale and donate the profits to the building? Could you offer to match your children's donation? Make this a family project.

## Ask your family

If you have Christian parents or grandparents, this might be something they would love to know about. If they have seen you grow at Oasis Church, there is a good chance they would love to help your church build for the future. Can you give them this booklet? Could you invite them to church during the Vision series (4<sup>th</sup>-18<sup>th</sup> May)?

## The heart of the matter is your heart

In the end, the figure you donate is not as important as the heart that gives it. Generosity is measured at the heart not the hip pocket.

We have a once in a lifetime opportunity to make a gospel investment that will pay dividends for generations to come. Take this opportunity and give in such a way that you can stand before God with a clear conscience and say, "I think this is a generous figure for me".

This is something our church is doing together. Don't miss out on the joy of partnering with others in this tangible way. Displaying the light of Jesus to our local community won't be accomplished by passive onlookers, but by all of us serving and engaging in new ways.

If you have any questions about the Pledge Card or how to donate please contact us. We would love to help.



We are embarking on this project not because we love buildings, but because we love Jesus, and we want more people to find life in him.





**NEXT  
STEPS**

# 10 ways to pray for our church

## 01 Praise God for the good news of Jesus

We would be utterly and eternally lost without the salvation that Jesus has purchased for us.

## 02 Praise God for those who have gone before us

We stand on the shoulders of those who have gone before us. We sit in this building today as a result of the sacrifice of God's people who gave to make this building a reality over 30 years ago. Praise God for their vision, generosity and sacrifice.

## 03 Praise God for our building

This building is a gift, given to us by God. Give thanks to God for the many lives that have been changed in our building. It has been a place where many people have found Jesus and been taught his truth.

## 04 Praise God for the growth of his church

It is humbling and exciting to be a part of a growing and healthy church. This isn't a result of our strength, but God's grace, and to him alone we give thanks.

## 05 Praise God for his daily generosity to us

God hasn't treated us as our sins deserve. Everything we have has been generously provided by God.

## 06 Pray for unity across our church

Pray that this project would unite us in our continued desire to help more people find life in Jesus.

## 07 Pray for wisdom for decision makers

Pray especially for staff, Church Council and the building committee. Pray for God's blessing and direction as they develop plans that are creative, considerate of our history, and meet the current and future needs of our church.

## 08 Pray that God would work in us to give generously

Giving is an act of worship and a work of grace. May God give us grace to worship him with our finances.

## 09 Pray that God would continue to grow his kingdom

Pray that many people would hear the gospel and be saved at Oasis Church for decades to come.

## 10 Pray that God would be honoured

In all that we plan, in all that we say, in all of our desires, and in every part of our church life and ministry together, may God receive the glory that is his and his alone.

# What if we do nothing?

Building projects are complex, expensive and involve risk. It might seem safer and easier to simply do nothing about our building. But to do nothing would have significant and ongoing consequences.

## If we do nothing, we will lack:

- A welcoming and visible presence in our local community
- A central place for gathering and fellowship
- A welcoming and usable foyer space
- Modern and sufficient bathroom facilities
- Adequate seating capacity in the auditorium
- Adequate space for our growing children's ministries
- Adequate facilities for parents and families (e.g., Parents Room)
- Adequate office facilities for staff and administration
- Adequate and functional space for the Community Cupboard

Additionally, we will still have to spend a significant amount of money on renovation and maintenance issues, which will only slightly update what we currently have rather than set us up for ongoing and expanded ministry into the future.

If we do not take action now, we are passing on the issue to future generations. Every generation has a responsibility to sacrifice and invest to take the gospel forward. We are so grateful for the sacrificial generosity of the generation before us. Many of us have come to faith or seen our friends, spouses, children or grandchildren come to faith or mature in the faith in our current building, which our forebears sacrificed to build. It is now our turn to renew our campus to ensure the gospel can continue to go forward in our lifetime and beyond.

# Estimated timeline



# Frequently asked questions

We believe in being as transparent and open as possible. Here are some questions you might be wondering about. Please feel free to contact us if you have more questions or come along to the Q&A events. Your questions will help to sharpen this process and help us to think more clearly.

## 1. Can we really afford this?

There's no avoiding the fact that this project will cost a lot of money. By the end of the project, we estimate that it will cost over \$10m. But that's not much when you consider the long-term impact this building will have under God. Our hope is that the building will serve thousands and thousands of people over the next 50 years. Can we afford it? Only with God's help. Can we afford not to try? No. Preaching the gospel to the lost is too important.

## 2. Couldn't the money be spent on other things?

There are lots of things that churches have to spend money on, including buildings. Over the years we've made small and gradual alterations and additions to our building, but we believe the time has now come to address our facilities holistically with an eye to the future. This is a normal thing for churches to do. We're also convinced it is a necessary step for us to take if we are going to continue to meet the needs of our growing church family and to reach those in our growing local community.

## 3. Isn't the money better spent on global mission and mercy ministries?

Global mission and mercy ministries are undoubtedly important to our church. But our best chance of multiplying what we are currently giving to missions and mercy is by growing the church. We have seen wonderful growth over the last few years, which has increased our giving to global missions and mercy ministries. The fact is, growing churches are able to give more each and every year. If this project will help our church reach more people and grow hearts engaged in God's global mission, then we will give even more over the next 20 to 30 years. Additionally, our own Care Ministry, which includes the Community Cupboard, will benefit significantly from this project, with much needed improvement to the facilities they use each week.

## 4. Aren't these plans more than what we need?

As committed Christians and gifted architects, Casey and Bek Vallance (from CultivAR Architecture) understand both churches and church buildings. Throughout the entire process, they have sought to ensure the plans are functional and useful for the life of our church, welcoming and comfortable, and great value for money. Additionally, we have leaned on members of our church family with experience in the industry (both members of the Building Committee and others) to ensure that the plans are reasonable and feasible. The reality is that any building project is expensive, but that doesn't mean it isn't good value.

## 5. Is approval from members required for the project to proceed?

Under the terms of our Constitution, formal member approval is not required for the building project per se. However, we do not plan on including any building project expenditure in our operational budget for 2025, which will be put to the members for approval at the 2025 AGM (usually held in May). Therefore, if the building project proceeds in the second half of 2025, we propose to seek approval of formal members at that point in time for a revised budget that includes the building project expenditure. In any event, the truth of the matter is that no building project will proceed unless it is practically supported by the financial gifts and prayers of our broader church family, whether formal members or otherwise.

## 6. Can the CRCA (Christian Reformed Churches of Australia) pay for this?

The CRCA, which is the network of all Christian Reformed churches in Australia, is the denomination we belong to. To expect them to pay for this project would be like other churches expecting us to pay for their building renewals. Our denomination exists to provide administrative services to the local church. The local churches are where the action is, and the denomination gives each church a lot of freedom to pursue initiatives that they deem best to reach their part of Australia. The CRCA provides assistance in other areas, but this is our responsibility, not theirs.

## 7. I don't earn much, why should I give?

A good principle when it comes to giving to the work of the gospel is that we want equal sacrifice not equal amounts. To raise \$3 million, we need on average 500 people to give \$6,000. For some people a gift of \$6,000 will be beyond them. For others, a gift of \$50,000 would not even be a sacrifice. All of us need to set aside time to bring this to God in prayer. Ask him to lead you and give you a heart for him and a heart of generosity. If you are married or have children, do this together. Assess your financial situation and work out what would be sacrificial in your circumstances.

## 8. Will a new building really help us to reach more people?

Church buildings don't connect anyone to Jesus. However, they do provide a place where people can hear the gospel, gather around God's word, serve one another, and grow together. Investing in a building sometimes seems like it's an alternative to investing in people, but it's not. The building exists to serve people. Investing in the building is investing in the ministry which will happen here for the next 50 years. That's why it's worth doing.

## 9. Are we asking people to give on top of their usual giving?

Yes. Please bear in mind that the day-to-day running of Oasis Church depends on people's regular giving. Giving to this project should be in addition to your normal church giving. Therefore, if Oasis Church is your church and you haven't started giving regularly yet, please start giving regularly first ([oasischurch.com.au/give](http://oasischurch.com.au/give)), and then give to the building fund second.

## 10. What if I'm not feeling joyful about giving?

We will feel a range of emotions as we give sacrificially with our finances, not dissimilar to giving our energy and time. This is not unusual. To encourage the Corinthian church to "excel in (the) grace of giving" (2 Cor. 8:7), the Apostle Paul wrote to them, *"I am not commanding you, but I want to test the sincerity of your love by comparing it with the earnestness of others. For you know the grace of our Lord Jesus Christ, that though he was rich, yet for your sake he became poor, so that you through his poverty might become rich"* (2 Cor. 8:8-9). Paul points their eyes, and ours, to Christ. This is why we give. Because God has given everything to us in Christ. This is the glorious reality that melts our hearts and moves us towards generosity. This is why Paul reminds the Corinthians in the next chapter, *"Remember this: Whoever sows sparingly will also reap sparingly, and whoever sows generously will also reap generously. Each of you should give what you have decided in your heart to give, not reluctantly or under compulsion, for God loves a cheerful giver"* (2 Cor. 9:6-7).

## 11. Are donations to this project tax deductible?

Unfortunately, no. The advice we received was that giving to this building project would not satisfy the criteria for tax deductibility.

## 12. Do we have any savings or an existing building fund that can contribute towards this?

We have sufficient cash in the bank to meet our ongoing operational and ministry needs and to meet any unexpected expenditure requirements. But there is no existing building fund as we haven't undertaken any significant works to our building in recent years or conducted any capital fundraising campaigns.

## 13. What if we don't raise enough money?

Our collective response to the giving campaign will determine the scope and speed of the work that is undertaken. We hope to complete all of Stage One initially, but if necessary, we will modify the plans depending upon the amount we are able to raise. This might mean we have to remove certain elements from the proposed plan, e.g. not build the roof over the plaza.

## 14. What if we raise more than our target?

This would be wonderful! Some of the benefits would include expanding the scope of Stage One or reducing the amount we would have to borrow.

## 15. Do you need to raise the full amount, before work can begin?

We are committed to renewing our facilities. The amount we raise through the 'Renew & Reach' campaign will determine the scope of what we can do. If we don't raise the full amount we may have to scale back on the project. The Building Committee will consider their options at the appropriate point in time and communicate with the church family in due course.

## 16. When is construction likely to begin?

If all goes to plan we are hopeful that construction on Stage One could begin in the second half of 2025.

### **17. Can we afford the on-going costs of a loan?**

We expect we'll need to borrow around \$1 to 1.5 million to finance the completion of Stage One. If we borrow \$1.5 million at 7% interest for a 15-year term, we would need additional gifts of around \$162,000 per year. This is roughly \$550 per household per year. We believe this is attainable.

In fact, it is an important feature of how we are approaching this project. We want to ensure that most of the costs of the building project are paid for up front. This will minimise the amount of interest paid over the long term, avoid an excessive debt burden in future years, and help ensure the church's ongoing financial resilience. By limiting the amount that we will borrow and committing only to build what we have the money to build today, our church family will determine the scope of this project according to the amount that we are willing to give.

### **18. Who will see the Pledge Cards?**

Just like normal church giving, only the Accountant and Treasurer, along with limited Administrative Staff, will manage pledges and financial gifts.

### **19. Can we reduce costs with working bees?**

Yes, we do anticipate there will be ways for the church family to get involved using their gifts and time to help us reduce the costs in certain areas. We will be sure to let you know about these opportunities when the time comes.

### **20. Why not begin with Stage Three (expanding the auditorium)?**

We have certainly grown over the last few years. Our average attendance across all three services on Sunday's (including kids) throughout 2024 has been 47% higher than 2022 and 13% higher than 2023. There is, however, still space for us to fit more people into our services. There were certain times of the year where we approached capacity in the two morning services, but generally speaking we still have some room to grow in our current auditorium.

There are also practical considerations with the staging. To reorient the auditorium and build into the hall to expand the auditorium seating capacity, we will lose the existing foyer and kitchen. That is why Stage One is proposed to be the new foyer and plaza including the new amenities block (where the new kitchen will eventually be co-located). We believe by beginning with Stage One, a welcoming foyer and central gathering area, which is visible to our local community, we will be able to welcome more people and be in a position to address our auditorium a few years down the track.

### **21. Will we go back to one morning service?**

No, even with the proposed changes to our auditorium, we will continue with two morning services. This will give us plenty of space to grow and to reach more people into the future. We do anticipate, however, the foyer and outdoor plaza area will serve as a central gathering place for our entire church family before and between our Sunday services.

### **22. What about our children's ministries? They're starting to run out of space already. Can we afford to wait another few years for Stage Two to be completed?**

Praise God for growth! This is a good problem to have and the ministry team is prayerfully considering how we can continue to run our ministries effectively while we wait for a larger space. We are fortunate that we are able to use some of the classrooms over at Genesis Christian College.

As an initial step, in 2025, we are changing the age brackets for Creche, Jnr Kids and Kids Church, so that one year level is effectively moving out of the hall where there is the most capacity pressure and into The Shed where there is room to grow. This will help in the near term, however, we expect that additional creative solutions may be required if we continue to grow at the current rate, particularly at the 8am service. We are monitoring this closely and will communicate any changes to the church family.

### **More questions?**

If you have more questions, we'd love to hear them. It's good questions that help us ensure we have looked at everything. Please feel free to email us or come to one of the Q&A nights.

# Who has been involved in this project?

This project began a few years ago through consultation with church leaders and ministry leaders to map out a vision for our church, our ministries and our facilities over the next few years. As the project progressed, Church Council established a Building Committee to oversee the technical aspects of the project and a Vision & Giving Committee to share the vision and raise support for the project. The Committees include members of our church family involved in the industry and have engaged qualified external professionals where appropriate.

## Church Council (past and present members)



**Ben Fien**



**Brydon Tweddell**



**Geoff Bongers**



**Ivor Kay**



**Joubert Furstenberg**



**Manie van Tonder (Treasurer)**



**Mosh Shittu**



**Peter Humphreys**



**Will Barker (Chair)**

## Key External Partners



## Building Committee



**Andrew Schoenmaker**

Andrew has over 30 years' experience as a professional engineer and manager in local government, project managing significant capital works programs. He was also involved in the construction of our existing church building over 30 years ago.



**James Lane (Chair)**

Jim has over 30 years' experience in the building & construction industry and currently works as a construction project manager for EY. He is also a qualified quantity surveyor. Jim is the primary point of contact for our key external partners in this project.



**Troy Sunderland**

Troy is married to Emma (our Creative & Womens' Ministries Leader) and has over 25 years' experience working as a builder. He has contributed practical expertise and bold and visionary faith to this project.



**Lorne Campbell**

Lorne is a Chartered Accountant and brings financial acumen to the project. He has recently ended a term as Treasurer of Oasis Church so understands the church's financial arrangements intimately. Lorne is Head of Finance at insurer NTL.

## Vision and Giving Committee



**Adam Schoenmaker (Chair)**

Adam has served as the Lead Pastor at Oasis Church since 2019. He has completed a Master of Divinity and is an ordained Minister within the Christian Reformed Churches of Australia. Prior to ministry, Adam completed a Bachelor of Business at QUT and was employed as an accountant. Adam currently serves on the board of Genesis Christian College.



**Gary Poulgrain**

Gary has over 40 years' experience in the banking & finance industry and is our primary point of contact with banking partners for this project. He works as Group General Manager at QPF Finance Group. Gary is also a former board member of Genesis Christian College, where he was closely involved in several of the College's building projects.



**Patricia Bongers**

Patricia is a Graphic Designer with over four years of experience at tech company Data\*3, where she is part of the marketing team. She also applies her creative expertise at a social media agency and through freelancing projects. Before transitioning to design, Patricia worked as a Registered Nurse after earning her nursing degree at QUT.



Artist impression - indicative only



